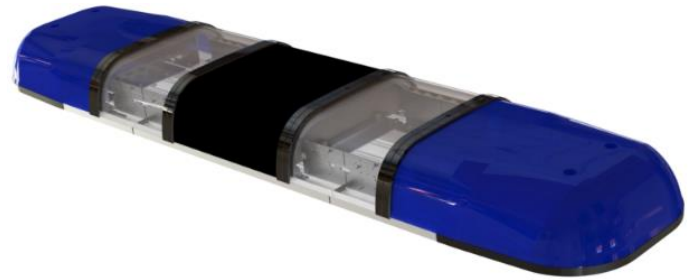


INTRODUCTION

The latest generation of roof lamps by MTX LED, a Romanian manufacturer, is ideally for basic warning signaling equipment of special vehicles. SLB are widely applied in police cars, fire-fighting vehicles, ambulances, road assistant cars, road service vehicles. High quality materials guarantee extraordinary resistance to mechanic damages and humidity. Technical specification, innovative appearance, specially designed lampshade and optics give the lamp a significant competitive advantage on the market.



SPECIFICATION

	SLB-2x6ML6B-2xML6R-2xWL3-2xWL6-1xTL-P-1500-BCMCB	SLB-2X8ML6B-1xTL-F-1800-BMB	SLB-2X4ML6A-0-1200-AAA	SLB-2x6ML6B-4xML6B-4xWL6-0-1500-CCDC-S100
Product designation	Police	Fire brigade	Ambulance	Ambulance
Compliance	R65 class 2, R10	R65 class 2, R10	R65 class 2, R10	R65 class , R10
Light colour	B-Blue	B-Blue	A-Amber	B-Blue
Optics colour	B-Blue, C-Clear, M-Milk	B-Blue, M-Milk	A-Amber	C-Clear, D-Black
No. of Warning Patterns	5	5	5	5
LED family	CREE®	CREE®	CREE®	CREE®
Flash frequency	2,1Hz	2,1Hz	2,1Hz	2,1Hz
Synchronization	5	5	5	5
Supply Voltage Range	10-15V, 22-30V	10-15V, 22-30V	10-15V, 22-30V	10-15V, 22-30V
Power supply type	DC	DC	DC	DC
Maximum Power	238W	170W	90W	236W (without speaker) 204W (without speaker)
Average Power	190W	138W	74W	
Ambient Temperature Range	-30 °C/ +50 °C	-30 °C/ +50 °C	-30 °C/ +50 °C	-30 °C/ +50 °C
Tc max.	+85 °C	+85 °C	+85 °C	+85 °C
Dimensions	1500 x 275,15 x 94,3 mm	1800 x 275,15 x 94,3 mm	1200 x 275,15 x 94,3 mm	1500 x 275,15 x 94,3 mm
IP rating	IP65	IP65	IP65	IP65
Cable type	12xG0.75	12xG0.75	12xG0.75	12xG0.75
Cable length	400	400	400	400
Weight	10,5 kg	13 kg	8,40 kg	10,6 kg
Extra Features	Automatic Night Mode	Automatic Night Mode	Automatic Night Mode	Automatic Night Mode
Available Connectors*	RT360 12PIN connector	RT360 12PIN connector	RT360 12PIN connector	RT360 12PIN connector
Lifetime**	≥ 35000 h	≥ 35000 h	≥ 35000 h	≥ 35000 h

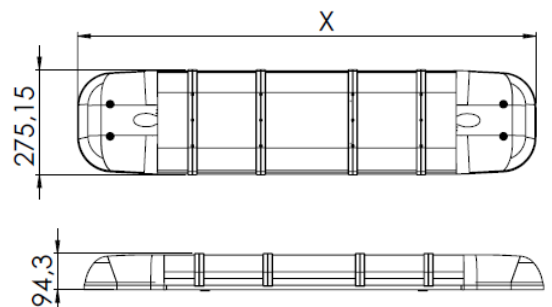
- Cree® LEDs
- Aluminum profile
- High efficiency and resistant for weather conditions
- Auto day/night mode
- 5 Flash Patterns
- Reverse polarity protection

FEATURES

DIMENSIONS

Total lamp length- X*
500 mm
600 mm
700 mm
800 mm
900 mm
1000 mm
1100 mm
1200 mm
1300 mm
1400 mm
1500 mm
1600 mm
1700 mm
1800mm

*Other length on the request



APPLICATIONS

SLB can be widely used in different types of application:

- Police car lights
- Fire-fighting vehicles lights
- Ambulance vehicles lights
- Work area lights
- Auxiliary vehicle lights
- Roadside assistance vehicles
- Road service vehicles

Contact:



+40 787 357370

sales@mtxledsolutions.com

www.mtxledsolutions.com

EQUIPMENT ELEMENTS

EQUIPMENT	ICON	AVERAGE POWER AND POWER CONSUMPTION
Module LED 4ML6 (blue,red, or amber)		80 W (13,5V/27V) 6A / 13,5V 3A / 24V
Module LED 6ML6 (blue,red or amber)		120 W (13,5V/27V) 9A / 13,5V 4.5A / 27V
Module LED 8ML6 (blue,red or amber)		160 W (13,5V/27V) 13A / 12V 7A / 24V
Front reflector WL6		19 W (13,5V/27V) 1.4A / 13.5V 0.75A / 27V
Side reflector WL3		15 W 1.2A / 12V 0.6A / 24V
Bicolour module ML6		20 W (13,5V/27V) 3A / 12V 1.5A / 27V
Special RED module		20 W (13,5V/27V) 3A / 12V 1.5A / 27V
Subtitle backlight TL		5 W (13,5V/27V) 0,35A / 13.5V 0,17A / 27V
Subtitle display MTL		25 W 2A / 12V 1A / 24V
Speaker S10/S15		100 W or 150W
Control module SLB-CON		-

Contact:

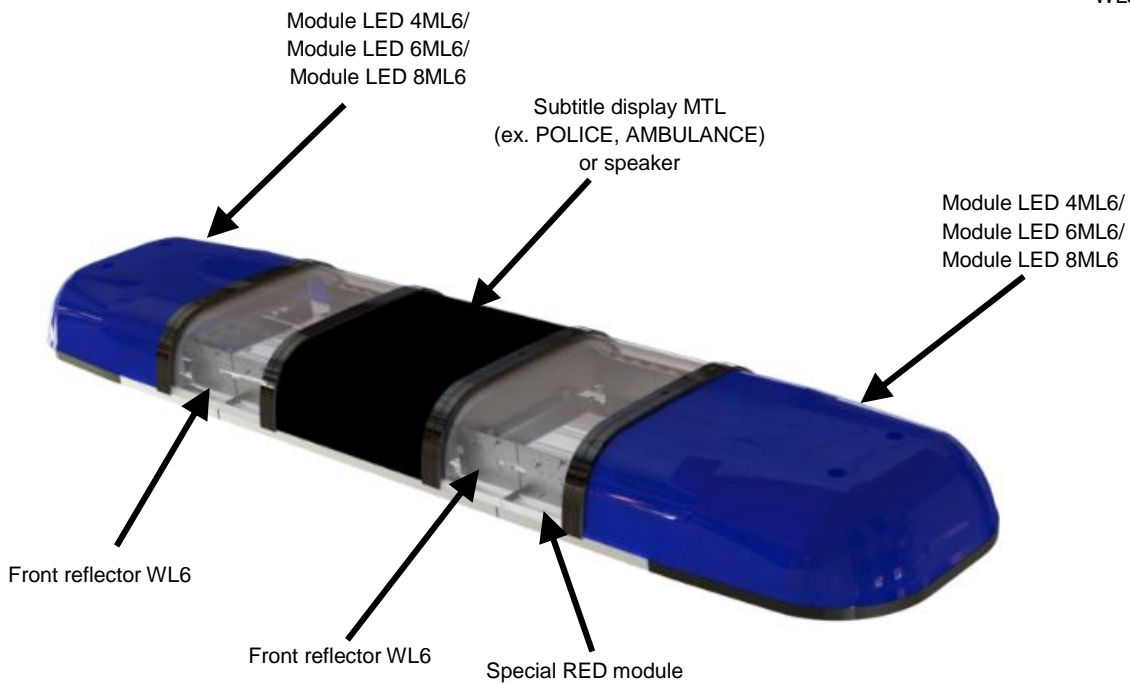
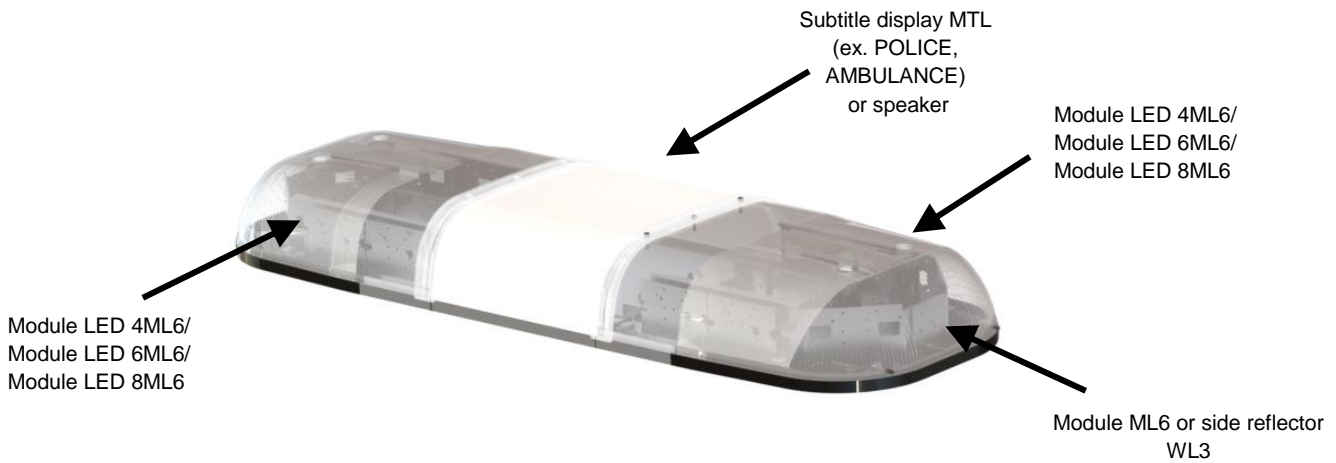


+40 787 357370

sales@mtxledsolutions.com

www.mtxledsolutions.com

EQUIPMENTS PLACEMENT



Contact:



+40 787 357370

sales@mtxledsolutions.com

www.mtxledsolutions.com

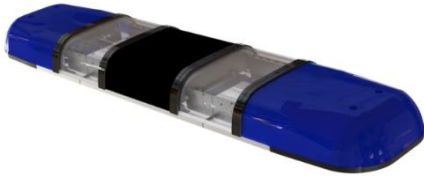
COLOUR VARIANTS EXAMPLES



SLB-2X8ML6B-4ML6W-1xTL-0-1200-**CCMCC**



SLB-2X8ML6A-4ML6W-1xTL-0-1200-**ACMCA**



SLB-2X8MLB-4-ML6W-0-1200-**BCDCB-S150**



SLB-2X4MLA-0-952-**AA**



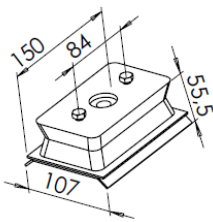
SLB-6ML6B-6MLR-1xTL-A-1500-**BMR**



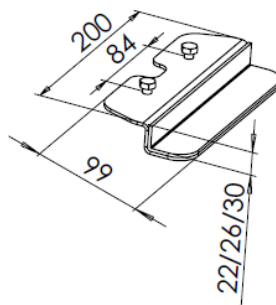
SLB-2X4ML6B-0-800-**BMB**

ACCESSORIES

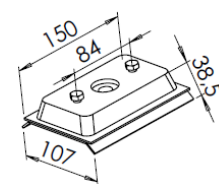
SLB-MK1



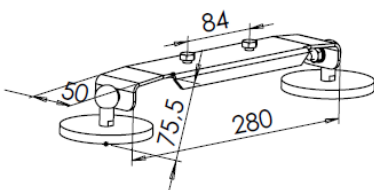
SLB-MK2



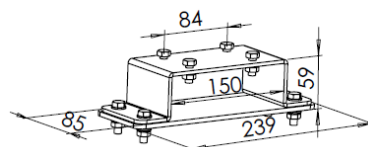
SLB-MK3



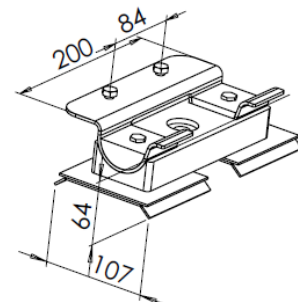
SLB-MK4



SLB-MK5



SLB-MK5



Contact:



+40 787 357370

sales@mtxledsolutions.com

www.mtxledsolutions.com

ORDERING CODES

Ordering code	Item	Description
DK171111.15181P00	SLB-2x6ML6B-2xML6R-2xWL3-2xWL6-1xTL-P-1500-BCM CB	1500 mm, 12x blue modules, 2x red modules, 2x side reflector, 2x front reflector, police inscription shade: blue-clear-milky-clear-blue
DK171111.18161F01	SLB-2X8ML6B-1xTL-F-1800-BMB	1800 mm, 16x blue modules, fire brigade inscription , shade: blue-milky-blue,
DK171111.12080002	SLB-2X4ML6A-0-1200-AAA	1200 mm, 8x amber modules, shade: amber-amber-amber
DK171111.15200003	SLB-2x6ML6B-4xML6B-4xWL6-0-1500-CCDCC-S100	1500 mm, 16x blue modules, 4x front reflector, shade: clear-clear-black-clear-clear, speaker 100W
DK171111.00000000*	SLB-2x#aakk-#xbkk-r-l-zzz-Sppp-yy	Custom version*

*Custom version: #-number of LED modules, aa-modules type 1, bb-modules type 2, kk- modules colour, l-length, z-shade colour, r-inscription, p- speaker power S-speaker, yy-special function

Contact:



+40 787 357370

sales@mtxledsolutions.com

www.mtxledsolutions.com