

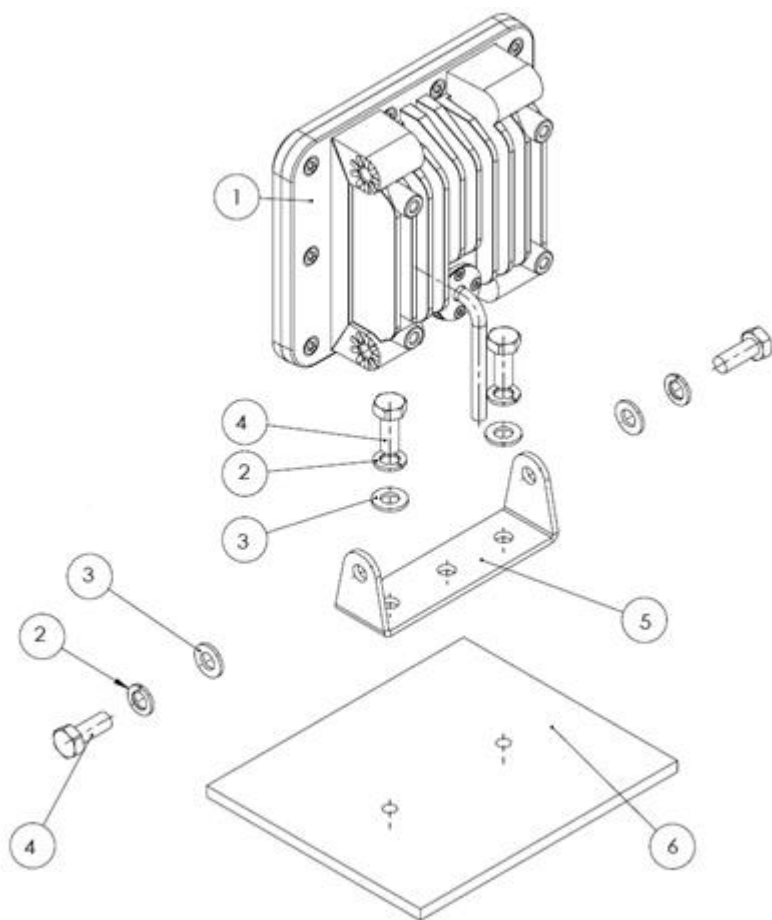
Mounting Instruction sSWM

INTRODUCTION

MTX LED sSWM lamp can be mounted in five different ways:

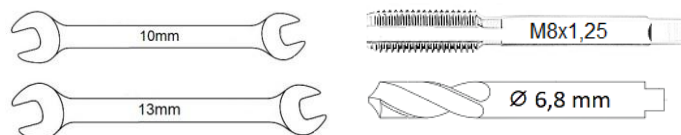
1. SUPPORT MOUNTING – THICK PLATE
2. SUPPORT MOUNTING – THIN PLATE
3. SIDE MOUNTING
4. BACK MOUNTING
5. MAGNET MOUNTING

Mounting Kit SWM-MK1 is added to each lamp.



NO.	Description	QTY.
1	Lamp	1
2	M8 Spring washer	4
3	M8 Washer	4
4	M8x25 Bolt	4
5	Support Plate	1
6	Mounting surface	-

USEFUL TOOLS



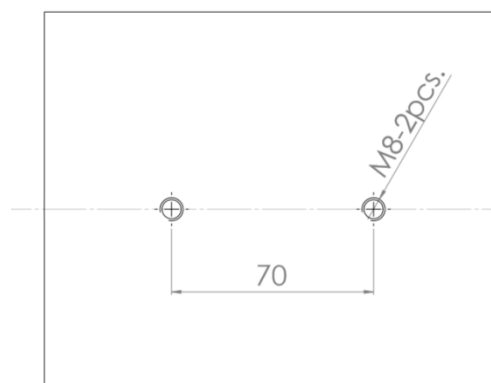
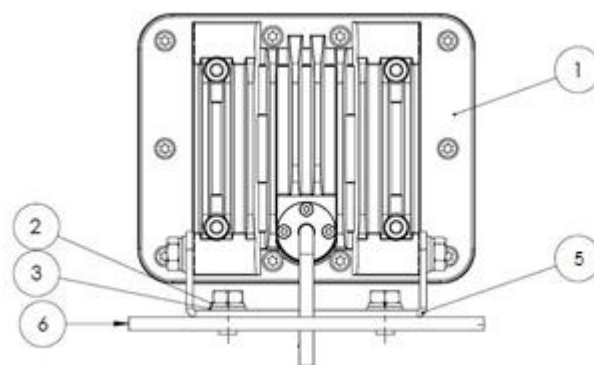
1. SUPPORT MOUNTING – THICK PLATE

For this mounting system SWM-MK1 Mounting Kit is required.

This mounting system is recommended for metal plates at least 4mm thick.

In this method threading is required.

Bolts tighten with moment 15 Nm.



Contact:



+40 748 751 465

sales@mtxledsolutions.com

www.mtxledsolutions.com

MTX LED reserves the right to make technical changes without prior notice.

Copyright © MTX LED 22.03.2018 VA02

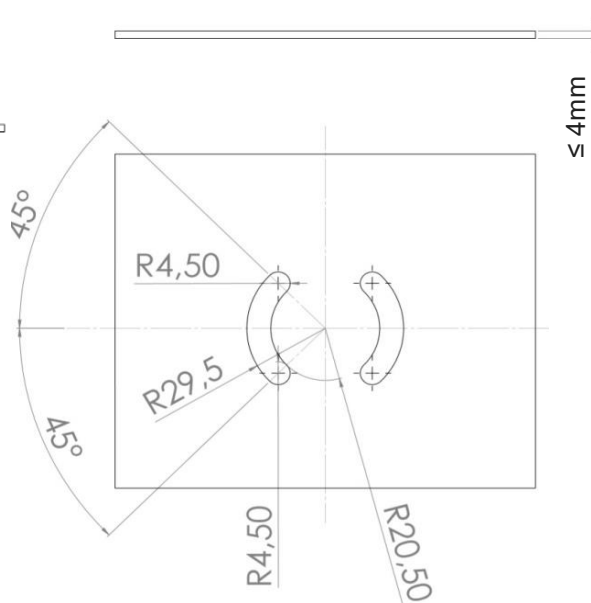
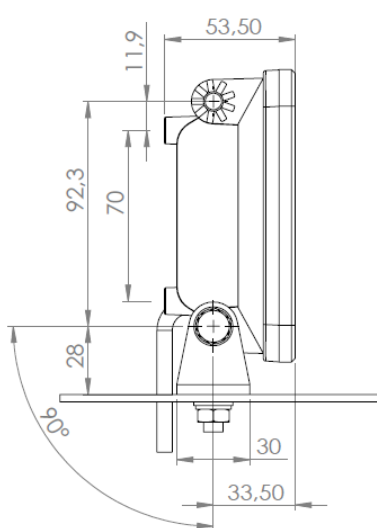
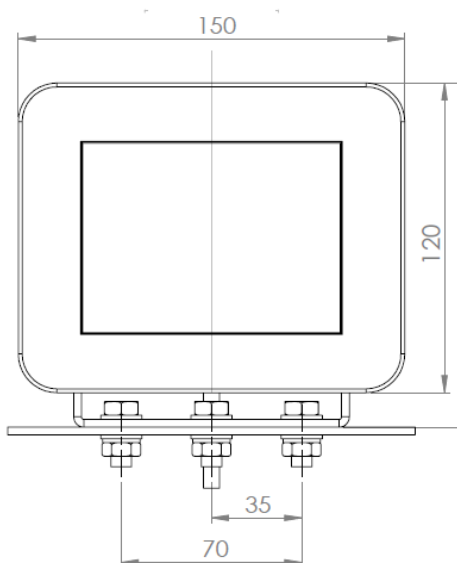
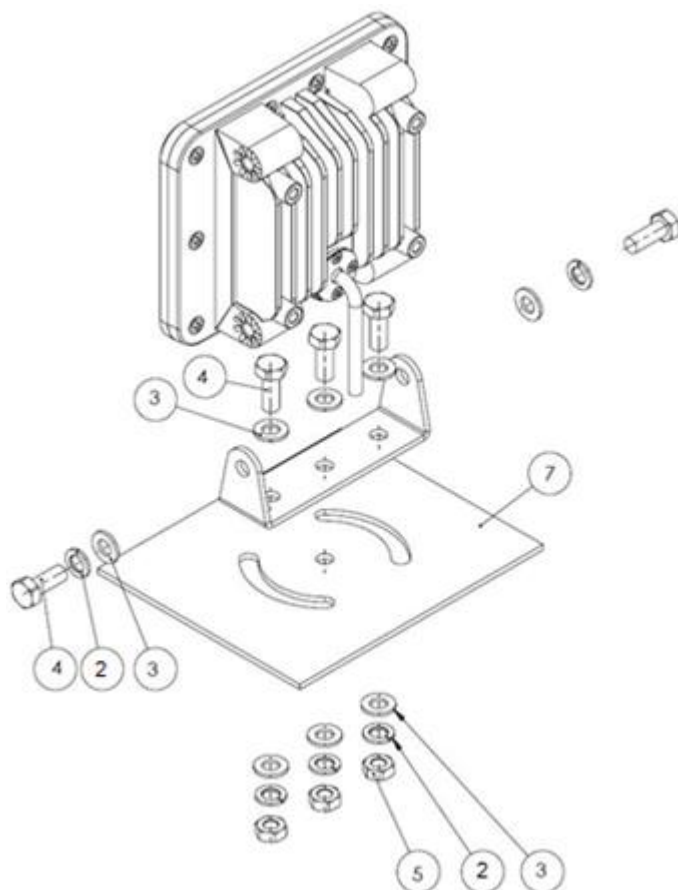
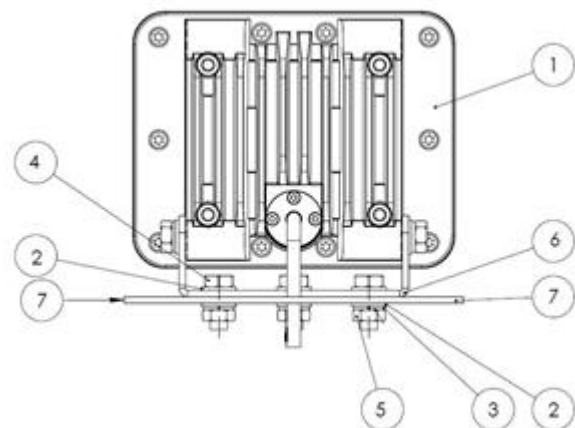
Mounting Instruction sSWM

2. SUPPORT MOUNTING – THIN PLATE

For this mounting system SWM-MK1 Mounting Kit is required.

This mounting system is recommended for metal plates thinner than 4mm.

Bolts tighten with moment 15 Nm.



NO.	Description	QTY.
1	Lamp	1
2	M8 Spring washer	5
3	M8 Washer	8
4	M8x25 Bolt	5
5	M8 Nut	3
6	Support Plate	1
7	Mounting surface	-

Contact:



+40 748 751 465

sales@mtxledsolutions.com

www.mtxledsolutions.com

MTX LED reserves the right to make technical changes without prior notice.

Copyright © MTX LED 22.03.2018 VA02

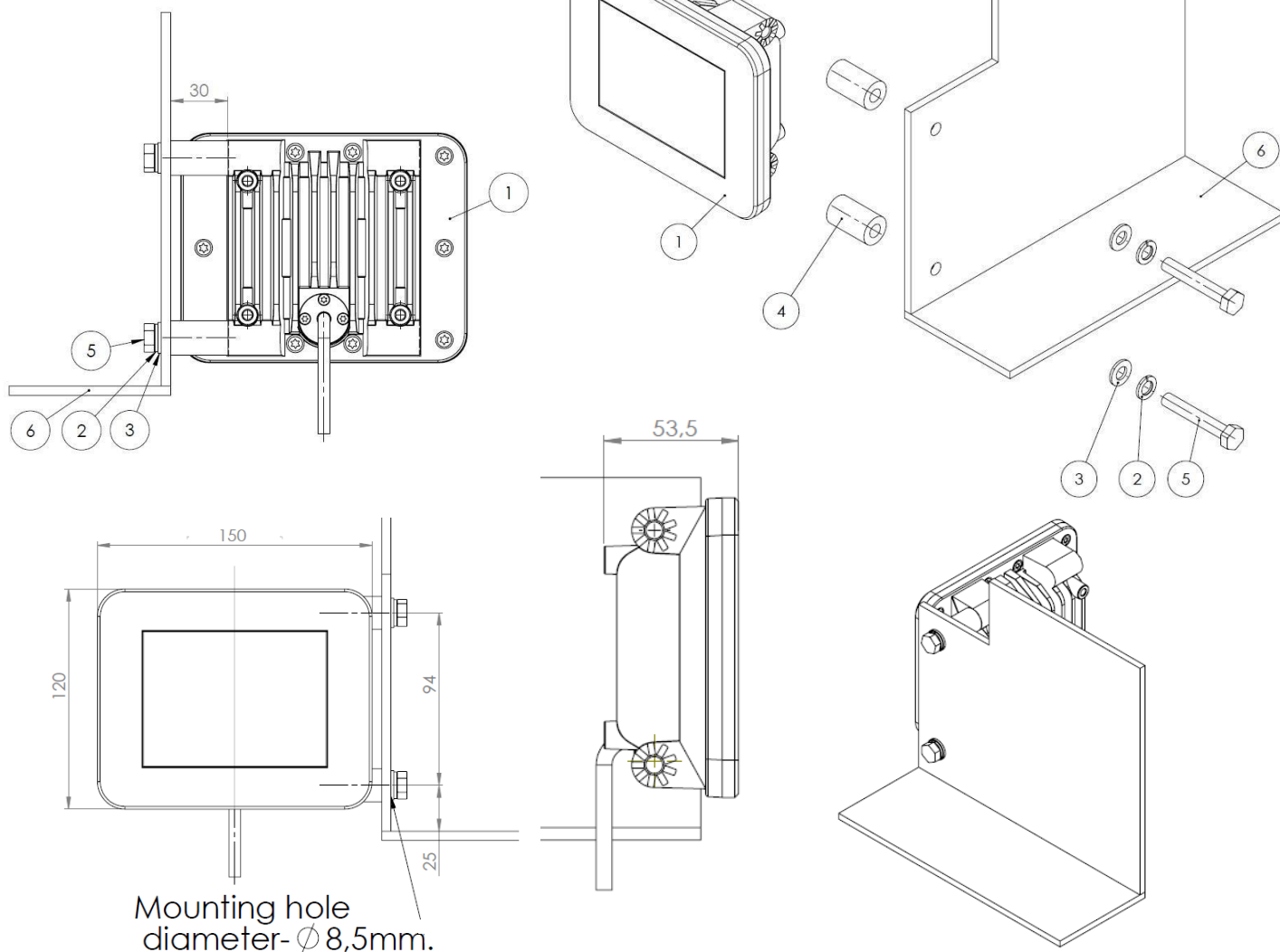
Mounting Instruction sSWM

3. SIDE MOUNTING

For this mounting system SWM-MK2 Mounting Kit is required.

This mounting system is recommended for metal plates thinner than 4mm.

Bolts tighten with moment 15 Nm.



NO.	Description	QTY.
1	Lamp	1
2	M8 Spring washer	2
3	M8 Washer	2
4	30 mm Distance spacer	2
5	M8x50 Bolt	2
6	Mounting surface	-

Contact:



+40 748 751 465

sales@mtxledsolutions.com

www.mtxledsolutions.com

MTX LED reserves the right to make technical changes without prior notice.

Copyright © MTX LED 22.03.2018 VA02

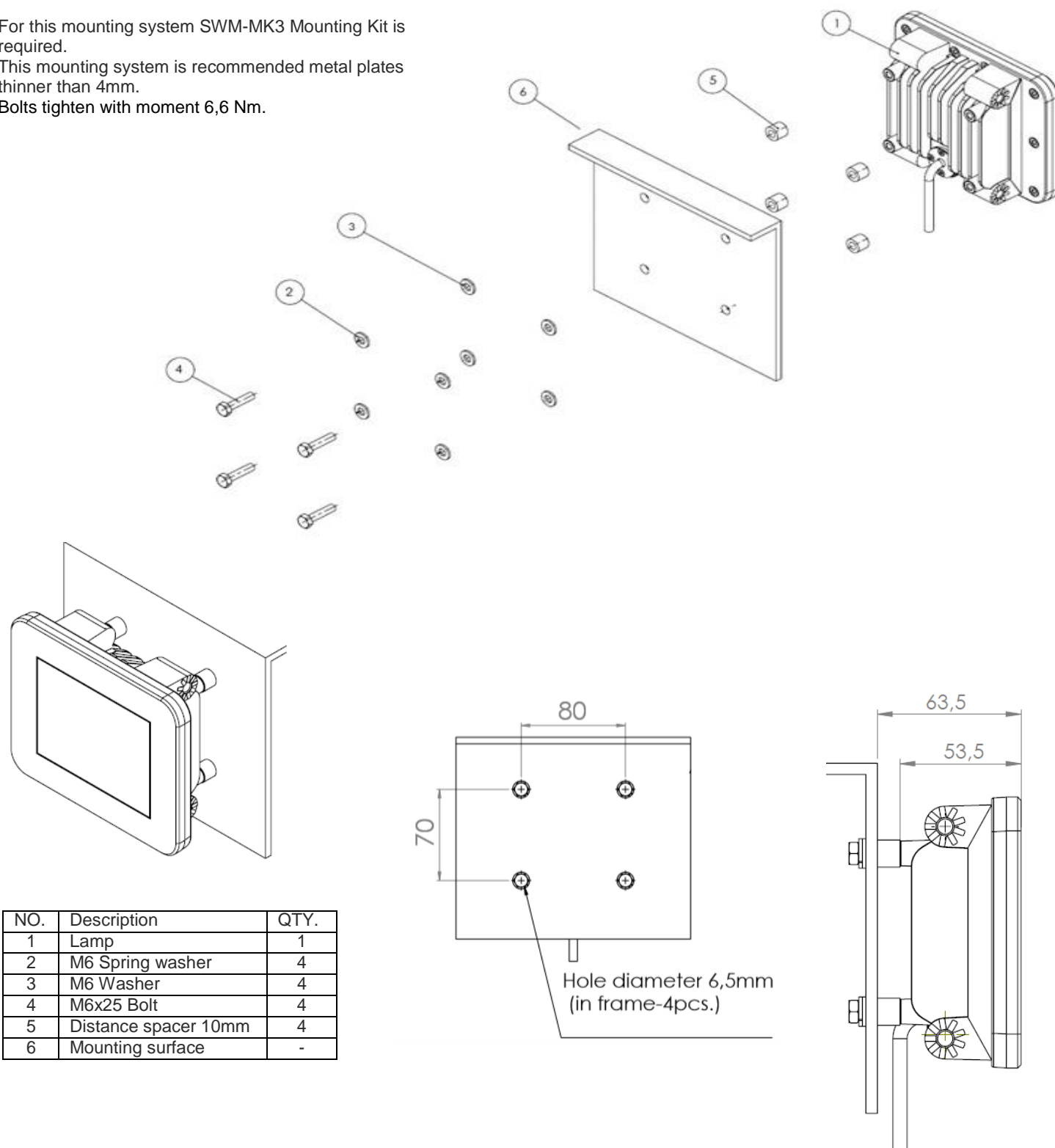
Mounting Instruction sSWM

4. BACK MOUNTING

For this mounting system SWM-MK3 Mounting Kit is required.

This mounting system is recommended metal plates thinner than 4mm.

Bolts tighten with moment 6,6 Nm.



NO.	Description	QTY.
1	Lamp	1
2	M6 Spring washer	4
3	M6 Washer	4
4	M6x25 Bolt	4
5	Distance spacer 10mm	4
6	Mounting surface	-

Contact:



+40 748 751 465

sales@mtxledsolutions.com

www.mtxledsolutions.com

MTX LED reserves the right to make technical changes without prior notice.

Copyright © MTX LED 22.03.2018 VA02

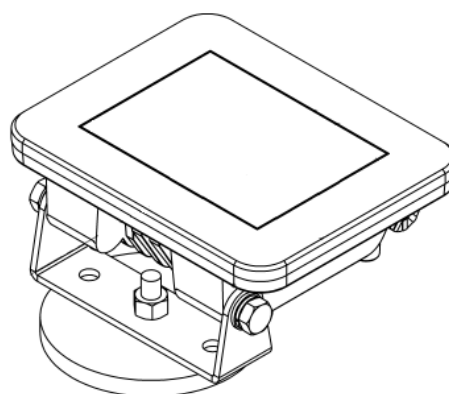
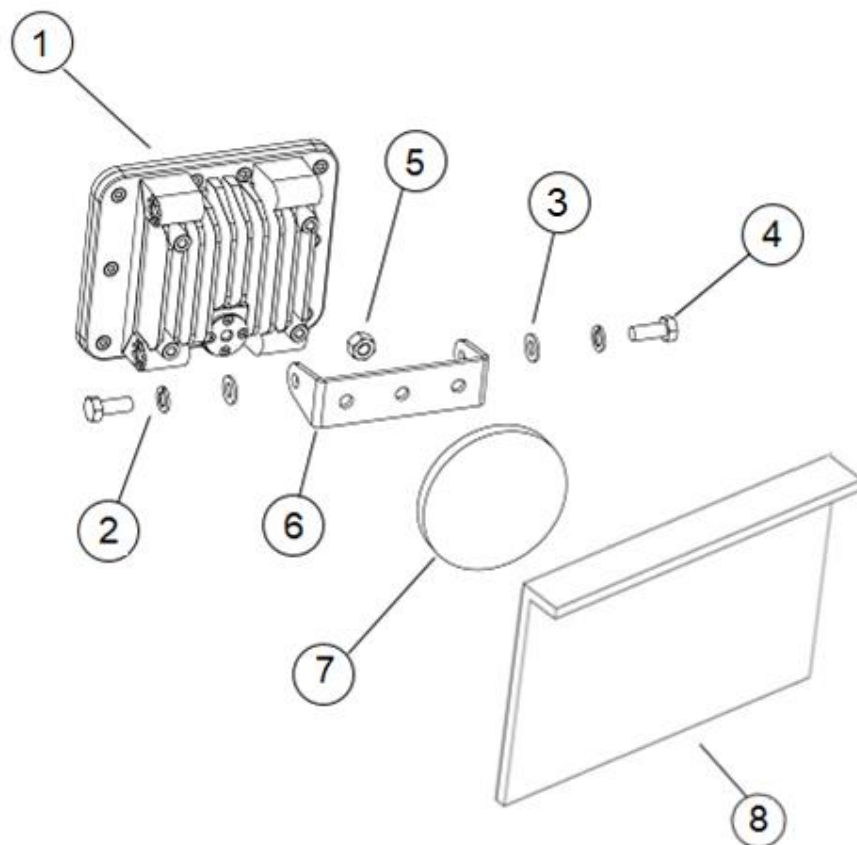
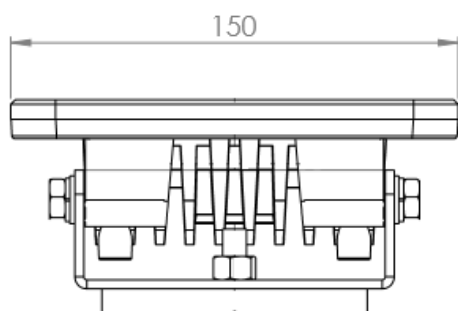
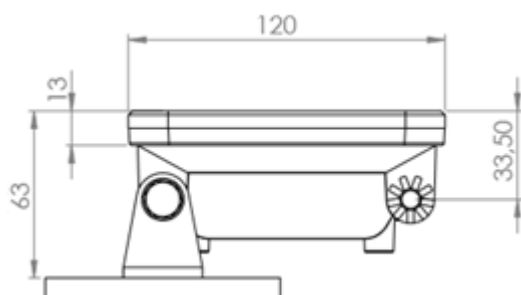
Mounting Instruction sSWM

5. MAGNET MOUNTING

For this mounting system SWM-MK6 Mounting Kit is required.

This mounting system is recommended metal plates at least 1mm.

Bolts tighten with moment 15 Nm.



NO.	Description	QTY.
1	Lamp	1
2	M8 Spring washer	2
3	M8 Washer	2
4	M8x25 Bolt	2
5	M8 Self-locking nut	1
6	Support Plate	1
7	Magnet	1
8	Mounting surface	-

Contact:



+40 748 751 465

sales@mtxledsolutions.com

www.mtxledsolutions.com

MTX LED reserves the right to make technical changes without prior notice.

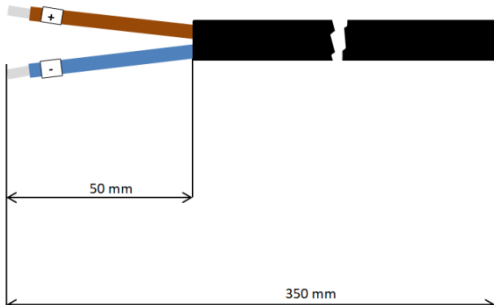
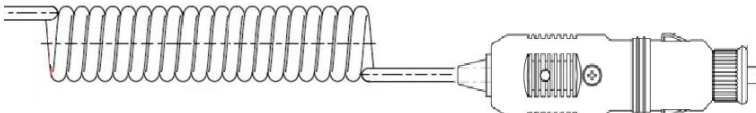
Copyright © MTX LED 22.03.2018 VA02

Mounting Instruction sSWM

6. ELECTRIC CONNECTION

Each lamp should be protected by proper fuse, according to technical table. In the spiral cord version, wire is terminated with lighter plug.

Supply voltage		10.8 - 30 V	
Average power consumption		12 V	24 V
		3,5 A	1,75 A
Max. Impulse current		4 A	
Recommended fuse value		5 A	
polarity	Brown	+	
	Blue	-	

Ordering code	Item	Description
150910.24370151	sSWM-24-WW-15-AAG	
150910.24370351	sSWM-24-WW-35-AAG	
150910.30310151	sSWM-30-CW-15-AAG	
150910.30310351	sSWM-30-CW-35-AAG	
150910.35320151	sSWM-35-CW-15-AAG	
150910.35320351	sSWM-35-CW-35-AAG	
150910.xx3yy0zz1*	sSWM-xx-yy-zz-AAG*	
150910.24370156	sSWM-24-WW-15-AAGS	
150910.24370356	sSWM-24-WW-35-AAGS	
150910.30310156	sSWM-30-CW-15-AAGS	
150910.30310356	sSWM-30-CW-35-AAGS	
150910.35320156	sSWM-35-CW-15-AAGS	
150910.35320356	sSWM-35-CW-35-AAGS	
150910.xx3yy0zz6*	sSWM-xx-yy-zz-AAGS*	

* Custom version possible change: CCT correlated color temperature (yy), FWHM angle reflector (zz), power consumption - Luminous flux (xx) (maximum power 41 [W])

Contact:



+40 748 751 465

sales@mtxledsolutions.com

www.mtxledsolutions.com

MTX LED reserves the right to make technical changes without prior notice.

Copyright © MTX LED 22.03.2018 VA02