

Mounting Instruction mBWL

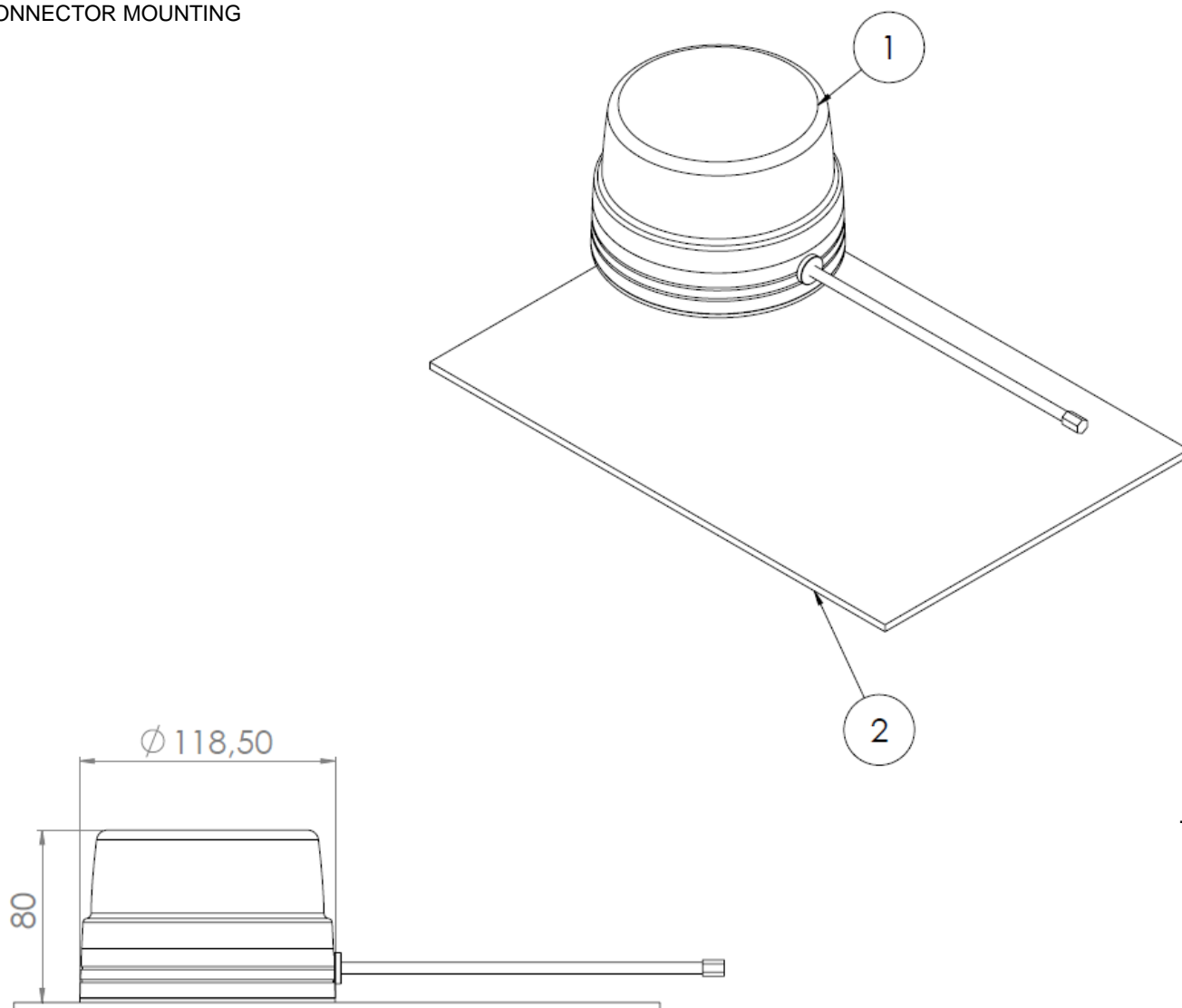
INTRODUCTION

mBWL should be mounted in 4 different ways.

1. MAGNET MOUNTING
2. 1-POINT MOUNTING
3. 3-POINT MOUNTING
4. DIN CONNECTOR MOUNTING

1. MAGNET MOUNTING

For this mounting system Mounting Kit is not required.



NO	Description	QTY.
1	Lamp	1
2	Mounting surface	-

Contact:  +40 748 751 465 | sales@mtxledsolutions.com | www.mtxledsolutions.com

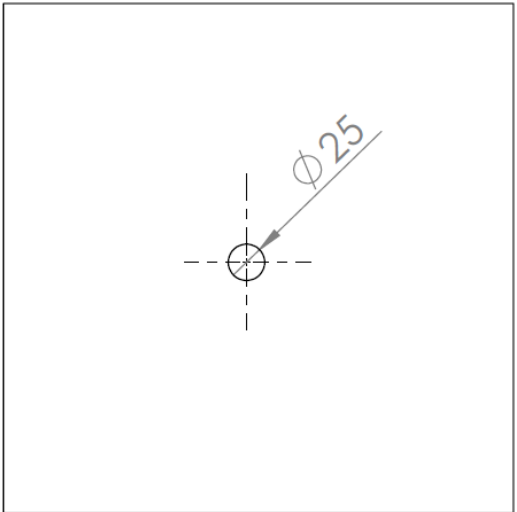
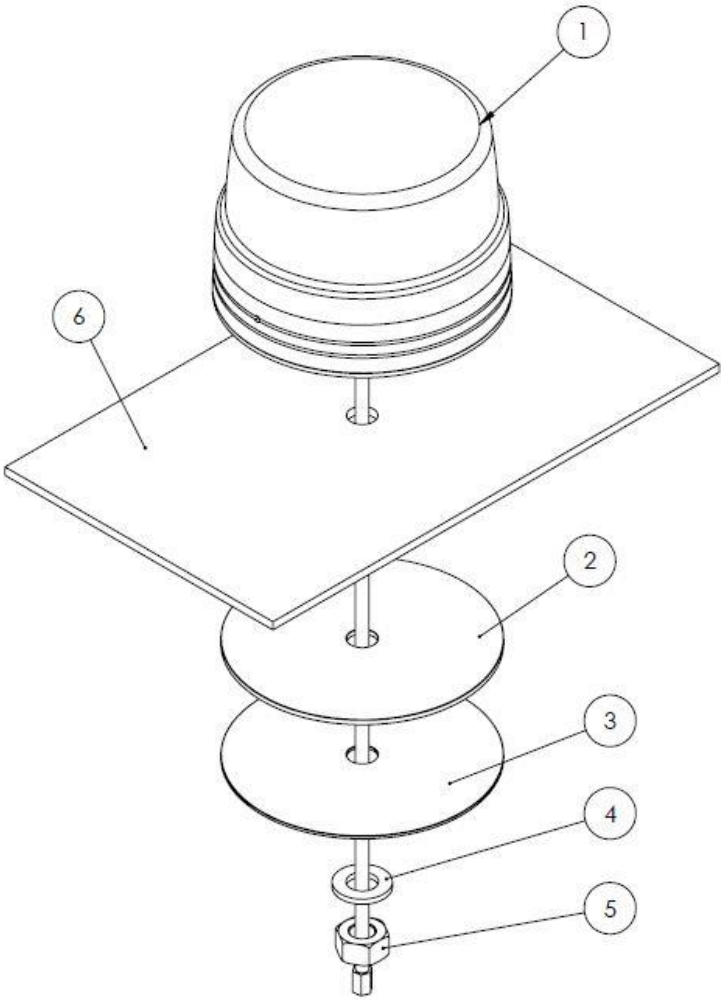
MTX LED reserves the right to make technical changes without prior notice.

Copyright © MTX LED 04.06.2018 VA01

Mounting Instruction mBWL

2. 1-POINT MOUNTING

For this mounting system mBWL-MK1 Mounting Kit is required.



NO	Description	QTY.
1	Lamp	1
2	Rubber Pad	1
3	Steel Washer	1
4	Washer M12	1
5	Nut M12	1
6	Mounting Surface	-

Contact:



+40 748 751 465

sales@mtxledsolutions.com

www.mtxledsolutions.com

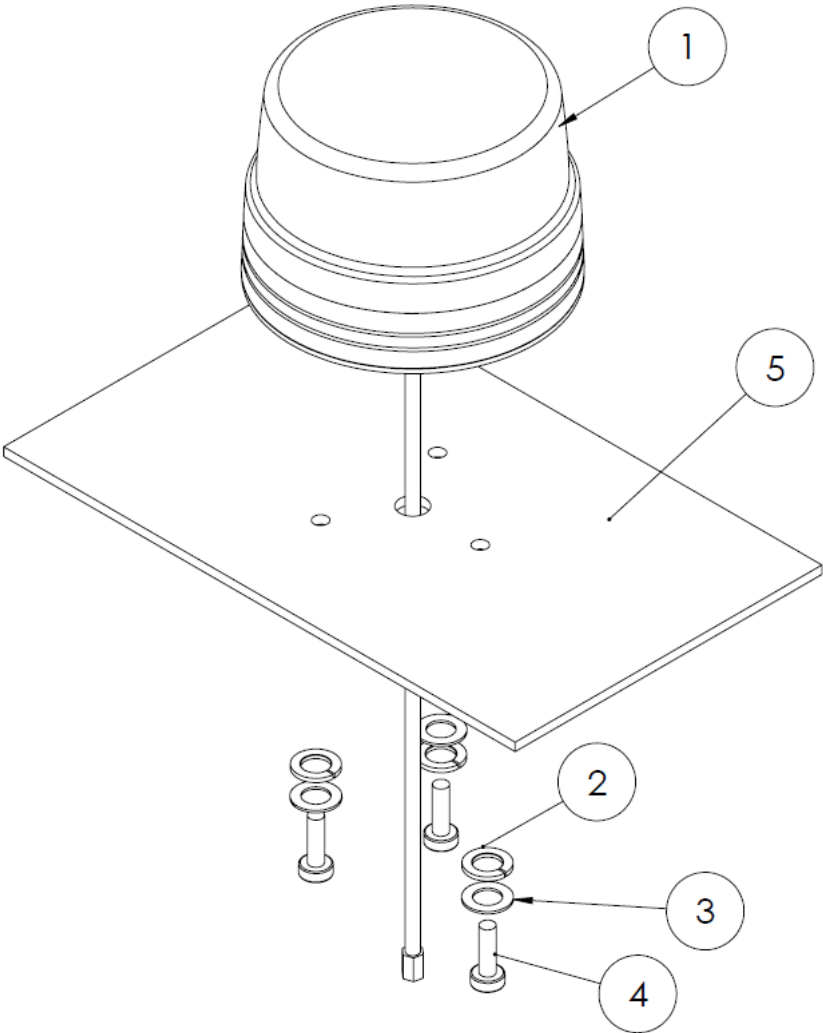
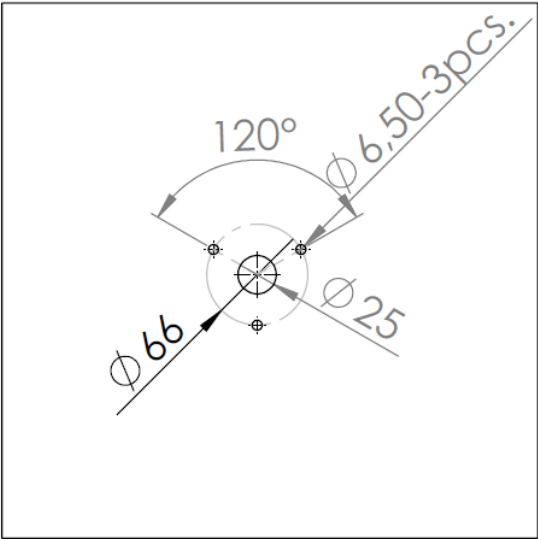
MTX LED reserves the right to make technical changes without prior notice.

Copyright © MTX LED 04.06.2018 VA01

Mounting Instruction mBWL

3. 3-POINT MOUNTING

For this mounting system mBWL-MK2 Mounting Kit is required.



NO	Description	QTY.
1	Lamp	1
2	Spring washer M6	3
3	Washer M6	3
4	Screw M6x20	3
5	Mounting Surface	-

Contact:



+40 748 751 465

sales@mtxledsolutions.com

www.mtxledsolutions.com

MTX LED reserves the right to make technical changes without prior notice.

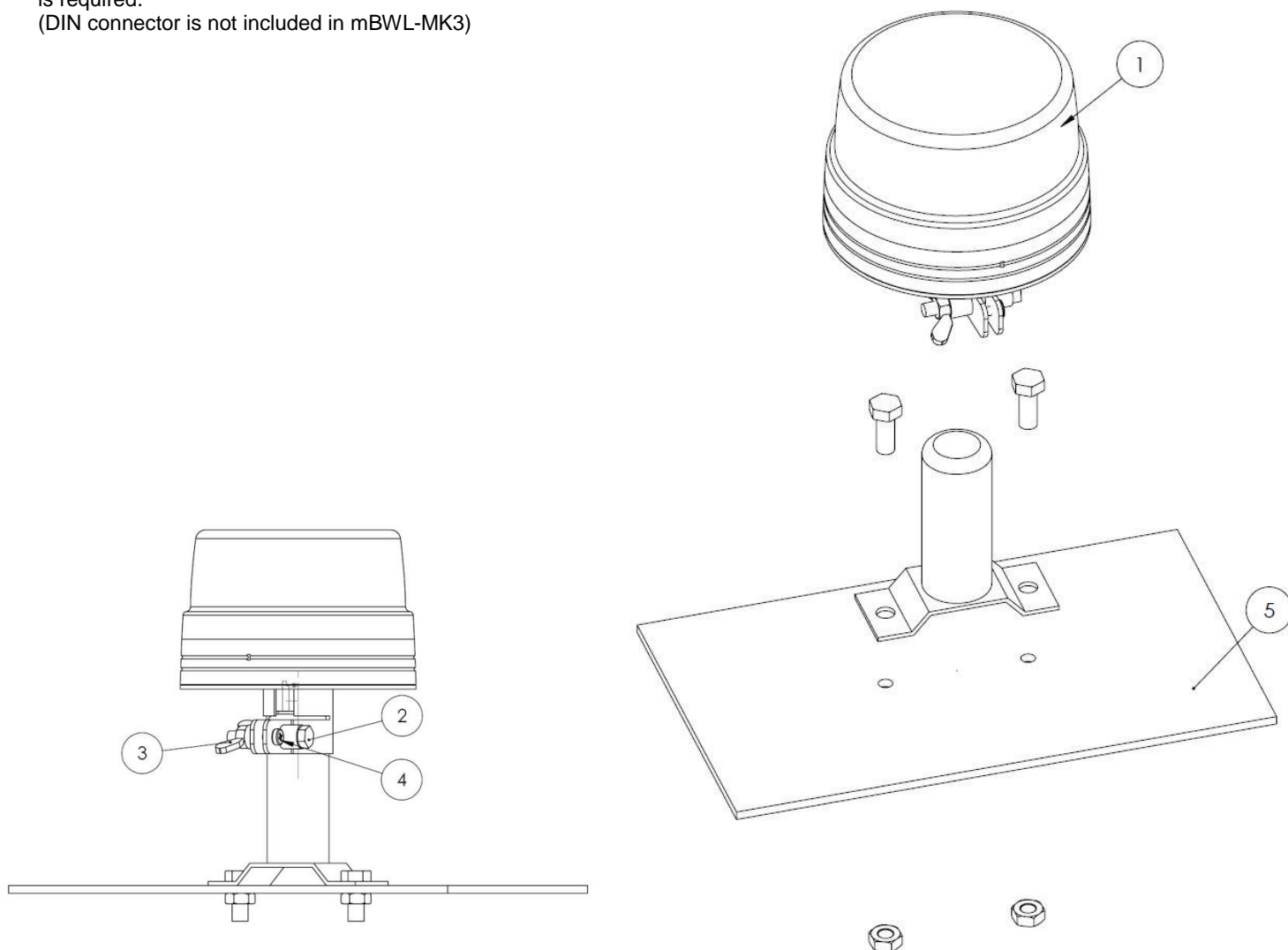
Copyright © MTX LED 04.06.2018 VA01

Mounting Instruction mBWL

4. DIN CONNECTOR MOUNTING

For this mounting system mBWL-MK3 Mounting Kit is required.

(DIN connector is not included in mBWL-MK3)



NO	Description	QTY.
1	Lamp	1
2	Screw M6x40	1
3	Wing nut M6	1
4	Screw M4x8	1
5	Mounting surface	-

Contact:  +40 748 751 465 | sales@mtxledsolutions.com | www.mtxledsolutions.com

MTX LED reserves the right to make technical changes without prior notice.

Copyright © MTX LED 04.06.2018 VA01

Mounting Instruction mBWL

5. ELECTRICAL MOUNTING

Each lamp should be protected by proper fuse, according to technical table.

Supply voltage		10 - 30 V	
Average power consumption		12 V	24 V
		3,5 A	1,75 A
Max. Impulse current		4 A	
Recommended fuse value		5 A	
Wires	Red	VCC	
	Black	GND	
	Yellow	Flash Patterns & Sync.	
	White	Low Power	

Contact:



+40 748 751 465

sales@mtxledsolutions.com

www.mtxledsolutions.com

MTX LED reserves the right to make technical changes without prior notice.

Copyright © MTX LED 04.06.2018 VA01